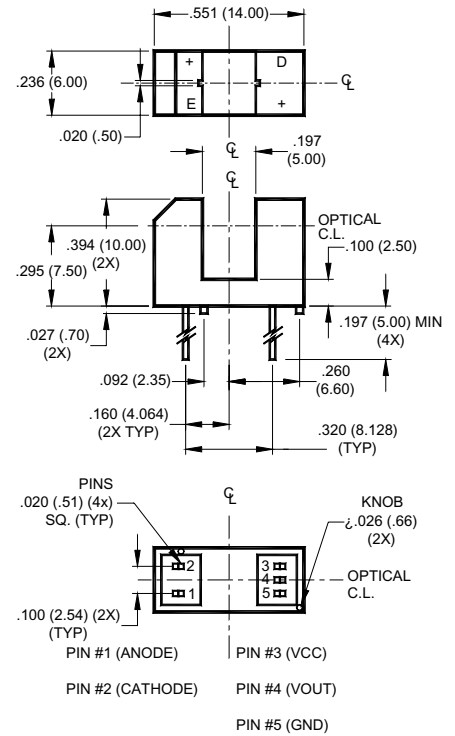
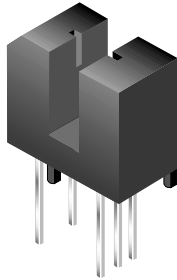


Transmissive Opto Sensors

Slotted Switch Logic 5 mm (OPTOLOGIC® – High Resolution)



Part Number	Test Conditions V _{CC} (V)	I _{CC} (mA) max	Output	Aperture Width (mm)		Gap Width (mm)
				Emitter	Sensor	
QVE00120	5	5.0	Buffer Open Collector	0.50	0.50	5.00

All dimensions are in inches (millimeters)

Absolute Maximum Ratings	PARAMETER	QVE	
	Temperature		
	T _{OPR}	-55 to +100°C	
	T _{STG}	-55 to +100°C	
	T _{SOL-H}	240°C for 5 sec	
	T _{SOL-F}	260°C for 10 sec	
	Input Diode		
	I _F	5 mA	
	V _R	6.0 V	
	P _D	100 mW	
Output Transistor			
V _{CEO}	30.0 V		
V _{EBO}	4.5 V		
I _C	20 mA		
P _D	150 mW		

Absolute Maximum Ratings	PARAMETER	QVE00120	
	Temperature		
	T _{OPR}	-40 to +85°C	
	T _{STG}	-40 to +85°C	
	T _{SOL-H}	240°C for 5 sec	
	T _{SOL-F}	260°C for 10 sec	
	Input Diode		
	I _F	50 mA	
	V _R	6.0 V	
	P _D	100 mW	
Output Optologic®			
I _O	50 mA		
V _{CC}	4.5 – 16 V		
V _O	30 V		
P _D	150 mW		